

**1996 ACCOUNTABILITY REPORT FOR
INDEPENDENT INSTITUTIONS
ELIGIBLE FOR THE FLORIDA
RESIDENT ACCESS GRANT**

Florida Postsecondary Education Planning Commission

April 1998

POSTSECONDARY EDUCATION PLANNING COMMISSION

Ivie R. Burch, Chairman
Panama City

Sally I. Gillespie
New Smyrna Beach

Maricela V. Langelier
Tampa

Richard C. Alterman
Opa Locka

Thomas J. Haynes
Tallahassee

Karen L. Plunkett
Orlando

Inez W. Bailey
Niceville

H. Clyde Hobby
New Port Richey

Maria M. Shelton
Davie

Robert A. Bryan
Gainesville

James E. Kirk, Jr.
Ocala

Edgar E. Tolle
Crystal River

William B. Proctor, Executive Director

The Postsecondary Education Planning Commission, initially created by executive order in 1980, given statutory authority in 1981 (SS 240.145 and 240.147, Florida Statutes), and reauthorized by the 1991 Legislature, serves as a citizen board to coordinate the efforts of postsecondary institutions and provide independent policy analyses and recommendations to the State Board of Education and the Legislature. The Commission is composed of 11 members of the general public and one full-time student registered at a postsecondary education institution in Florida. Members are appointed by the Governor with the approval of three members of the State Board of Education and subject to confirmation by the Senate.

A major responsibility of the Commission is preparing and updating every five years a master plan for postsecondary education. The enabling legislation provides that the Plan "shall include consideration of the promotion of quality, fundamental educational goals, programmatic access, needs for remedial education, regional and state economic development, international education programs, demographic patterns, student demand for programs, needs of particular subgroups of the population, implementation of innovative educational techniques and technology, and the requirements of the labor market. The capacity of existing programs, in both public and independent institutions, to respond to identified needs shall be evaluated and a plan shall be developed to respond efficiently to unmet needs."

Other responsibilities include recommending to the State Board of Education program contracts with independent institutions; advising the State Board regarding the need for and location of new programs, branch campuses and centers of public postsecondary education institutions; periodically reviewing the accountability processes and reports of the public and independent postsecondary sectors; reviewing public postsecondary education budget requests for compliance with the State Master Plan; and periodically conducting special studies, analyses, and evaluations related to specific postsecondary education issues and programs.

Further information about this publication as well as other Commission publications, meetings and activities of the Commission may be obtained from: the Postsecondary Education Planning Commission, 325 West Gaines Street, Ralph Turlington Building, Tallahassee, Florida, 32399-0400; Telephone (850) 488-7894; FAX (850) 922-5388; Website - www.firn.edu/pepc.

POSTSECONDARY EDUCATION PLANNING COMMISSION

***1996 ACCOUNTABILITY REPORT FOR INDEPENDENT
INSTITUTIONS ELIGIBLE FOR THE FLORIDA
RESIDENT ACCESS GRANT***

April 1998

Table of Contents

Introduction.....	1
Notes on Methodology.....	2
Overview.....	3
Institutional Summary.....	5
Fall 1995 Racial/Ethnic Distribution of Full-Time Faculty.....	6
Fall 1996 Full-Time Faculty Undergraduate Teaching Loads.....	8
Percentage of Undergraduate Course Sections Taught by Faculty in Fall 1996.....	9
Fall 1996 Size Distribution of Undergraduate Course Sections.....	10
Fall 1996 Mean Undergraduate Course Section Size.....	12
Comparison of Actual Credit Hours Accrued at Graduation Versus the Number Required for a Bachelor's Degree.....	13
Graduation and Retention Rates for First-Time in College Full-Time Freshman.....	14
Racial/Ethnic Distribution of First-Time in College Freshman Entering in Fall 1991.....	15
Five-Year Graduation and Retention Rates for First-Time in College Full-Time Freshman Entering in 1991.....	17
Associate of Arts Transfer Students from Florida Community Colleges Two- and Three-Year Graduation Rates from ICUF Institutions.....	18
Average Debt Accumulated by Four-Year Bachelor's Degree Graduates for Students Who Graduated During the Period July 1, 1995 through June 30, 1996.....	19
ICUF Institutions That Had Undergraduate Academic Programs Reviewed for Specialized Accreditation in 1995-96.....	20

The original set of 12 Indicators that data in this report address were developed by the Postsecondary Education Planning Commission (PEPC) in consultation with the Independent Colleges and Universities of Florida (ICUF) Presidents. Subsequently, data collection representatives from ICUF member institutions (principally institutional research directors) made refinements in the data collection process in 1995. The substantial time and effort that institutional data collectors put into preparing the Accountability Report for their institution is gratefully acknowledged. Dr. Blair Atherton, Director of Institutional Research at Nova Southeastern University, compiled the data received from ICUF member institutions and prepared the 1996 ICUF Accountability Report that was submitted to PEPC. Subsequently, PEPC staff inserted into the ICUF report data from the University of Miami (not an ICUF member institution) at the bottom of each chart. University of Miami data are not included in ICUF totals, and all text summaries contained herein, including the Introduction, Notes on Methodology, and Overview, apply only to ICUF member institutions. A copy of the original report prepared by ICUF is available upon request from the Commission office.

INTRODUCTION

The Independent Colleges and Universities of Florida (ICUF) Accountability Report was created in consultation with the Postsecondary Education Planning Commission (PEPC) in response to Florida Statute 240.147. The Statute requires all private, independent postsecondary institutions eligible for the Florida Resident Access Grant (FRAG) to develop accountability processes. This is the third cycle of accountability reporting by ICUF institutions.

This Accountability Report contains a summary of data provided by only institutions that are members of ICUF*. Other regionally accredited private institutions that are not members of ICUF, and nonregionally accredited proprietary institutions are not included.

It should be noted that the data contained in this report focus exclusively on *undergraduate* students, faculty, and programs. The data are intended to address broad issues of quality, productivity, diversity, and access. While undergraduates are of particular interest to federal and state legislators, it should not be forgotten that many ICUF institutions also offer a variety of master's, doctoral, and first-professional degree programs.

The layout and presentation of many of the individual data summaries in the report have been revised in an effort to make them easier to read and understand. Selected data are presented in both tabular and graphical formats. Initial steps were taken to supplement accountability data with some much needed contextual information to better familiarize legislators with the characteristics of the diverse group of institutions that comprise ICUF. Additional context and background should be added to future reports to provide those using the report with a more complete description of the context in which each institution carries out its mission and the contribution each makes to educating Florida residents.

In last year's Accountability Report, the ICUF members were listed alphabetically in all data summaries. This might suggest that they are all equal or comparable in their characteristics. It must be emphasized that the ICUF institutions are diverse: they differ from each other in details of their mission, characteristics of the student body, degree offerings, etc. Therefore, it should not be assumed that data for one ICUF institution is comparable to that of another, or to one of the Florida public universities. In this report, institutions were grouped by the types of degrees they offer (i.e., bachelor's, master's, and doctorate) as an interim measure, until more inclusive criteria for grouping similar institutions can be developed.

Where similar data were available, comparisons were made between aggregate data for the ICUF *sector* versus aggregate data for the State University System of Florida (SUS) *sector*. Comparing aggregate data at the *sector-level* should normalize to some extent for some of the differences among institutions cited above. For example, at the sector level, the racial/ethnic demographics of faculty and undergraduates are similar for ICUF and the SUS. The intent is to provide some type of context in which to interpret the data and evaluate the contribution the ICUF group of institutions makes to higher education in Florida.

*For the purpose of the current document, University of Miami data has been incorporated into the bottom of each graph.

NOTES ON METHODOLOGY

Much of the data describing students focuses on cohorts of full-time undergraduates that entered college for the first time at an ICUF institution in the Fall 1991. Cohorts were constructed using the methodology and criteria prescribed by the Student Right-to-Know Act (*Federal Register*, Vol. 60, December 1, 1995, section 668.46, pp.61787-88).

Racial/ethnic data for faculty came from the 1995 IPEDS Fall Staff Survey that institutions submit to the U.S. Department of Education every other (odd-numbered) year. Similarly, data concerning institutional enrollments were obtained from data appearing in IPEDS Fall Enrollment Surveys. None of the other data in the report could be obtained from any existing federal or other reports routinely prepared by institutions.

Unless noted otherwise, comparative data for SUS institutions came from *the 1995-96 Fact Book* of the State University System of Florida produced by the Board of Regents in Tallahassee, Florida.

OVERVIEW

The Independent Colleges and Universities of Florida (ICUF) are a diverse group of 24 institutions with different missions, serving diverse student populations, and offering a wide variety of undergraduate, graduate, and professional programs. They are dispersed throughout the state located in or near large cities, such as Miami, Fort Lauderdale, Jacksonville, and Tampa, as well as in more rural areas of Florida. Several institutions date back to the 1800's, while some others are relatively young opening their doors to students as recently as 1968.

Total enrollments at ICUF institutions range from approximately 400 to 15,000 students. The number of undergraduate majors offered at individual institutions ranges from 6 to 120. The ICUF group includes institutions that offer majors in liberal arts and sciences, fine arts, as well as engineering and technical fields. The group includes both religious- and nonreligious-affiliated institutions.

This report focuses on undergraduate students and programs and attempts to identify key data elements that may provide indicators of attributes such as racial/ethnic diversity, broad access to educational opportunities and to specific majors or fields of study, educational quality, and institutional productivity.

Some of these attributes are more amenable to quantitative measurement than others. In particular, quality of education cannot be measured or characterized solely by quantitative criteria. A fundamental definition of academic quality has been a subject of much debate in academia spanning many decades.

The *1995-96 Fact Book* of the State University System of Florida provided an excellent source of data for limited comparisons of SUS statistics with those of the ICUF institutions. ICUF institutions compared favorably with the SUS in areas such as the diversity of students and faculty, five-year graduation rates of the Fall 1991 cohort of first-time in college, full-time freshmen, and three-year graduation rates of full-time associate of arts students that transferred to ICUF institutions. Comparative data were not readily available for other types of data contained in this report.

Several outstanding strengths of ICUF institutions emerged from examination of data contained in this report:

Small Class Sizes

Eighty-seven percent of all Fall 1996 undergraduate classes at ICUF institutions were fewer than 30 students and less than 4% of all classes contained more than 40 students. Compared to the SUS, ICUF institutions had smaller mean undergraduate class sizes. Sector-wide the mean class size was 18 and individual ICUF institution means ranged from 15 to 23 students. In contrast, the mean undergraduate class size ranged from 32 to 49 students at SUS institutions. That is, mean class sizes at the SUS were twice that of ICUF institutions. Moreover, the single largest class at any ICUF institution in Fall 1996 was 221 students, substantially smaller than the largest classes at many SUS institutions.

Access to Higher Education

One of the ways that ICUF institutions complement the institutions of the SUS is by providing access to a wide array of fields of study. ICUF institutions offer some programs not available in the SUS, and others that provide student access to particular majors or fields of study that are space-limited in the SUS. For example, ICUF institutions (without exception) admitted 100% of students transferring from Florida Community Colleges with an associate of arts degree into the undergraduate program of their choice.

Efficient Progression to Degree Completion

An area that has been problematic at Florida Community Colleges and the SUS was that many students were graduating with large numbers of credits over and above the minimum number needed to graduate. This increased students' length of stay, and the cost to state taxpayers. Both state systems have recently taken action to reduce this problem.

As shown by data contained in this report, students graduated from ICUF institutions without a lot of extra credits in excess of the minimum required for graduation. On average, students graduated with only six credits in excess of the minimum required to graduate. Moreover, a retrospective analysis of full-time freshmen that entered college for the first time at ICUF institutions in Fall 1991 revealed that they graduated in a mean of four years. The mean time to degree at individual ICUF institutions ranged from 3.8 to 4.5 years.

It is unclear to what degree these results may be attributable to institutional program administrative processes (e.g. advising) versus the higher cost of tuition at private institutions. It will be interesting to see whether the SUS strategy of charging higher tuition for excess credits will result in reduced credits at graduation in public sector institutions.

THE INDEPENDENT COLLEGES AND UNIVERSITIES OF FLORIDA

Institutional Summary

- ICUF is comprised of a diverse group of 24 institutions offering a wide variety of undergraduate, graduate, and first-professional programs.
- Geographically dispersed throughout the state, the ICUF institutions served more than 75,000 students in the Fall Term alone.
- Also diverse in size, total Fall 1996 institutional enrollments ranged from 400-15,000 students.
- The five oldest institutions date back to the 1800's, while some others opened their doors as recently as the 1960's.

Institution/Degrees Offered	*Year Established	Location	**Total Enrollment
Bachelor's Degrees			
Bethune-Cookman College	1904	Daytona Beach	2,335
Clearwater Christian College	1966	Clearwater	538
Eckerd College	1959	St. Petersburg	1,424
Edward Waters College	1866	Jacksonville	429
Flagler College	1968	St. Augustine	1,526
Florida College	1944	Temple Terrace	379
Florida Memorial College	1879	Miami	1,561
Ringling School of Art & Design	1931	Sarasota	798
Southeastern College	1935	Lakeland	1,090
Warner Southern College	1964	Lake Wales	616
Webber College	1927	Babson Park	430
Bachelor's & Master's Degrees			
Embry-Riddle Aeronautical University	1926	Daytona Beach	11,365
Florida Southern College	1885	Lakeland	2,692
Jacksonville University	1934	Jacksonville	2,318
Lynn University	1963	Boca Raton	1,632
Palm Beach Atlantic College	1968	West Palm Beach	1,830
Rollins College	1885	Winter Park	3,297
Saint Leo College	1889	St. Leo	7,123
University of Tampa	1931	Tampa	2,650
Bachelor's, Master's, and Doctoral Degrees			
Barry University	1940	Miami Shores	7,016
Florida Institute of Technology	1958	Melbourne	4,185
Nova Southeastern University	1964	Ft. Lauderdale	14,961
Saint Thomas University	1962	Miami	2,133
Stetson University	1883	Deland	2,784
ICUF Total			75,112

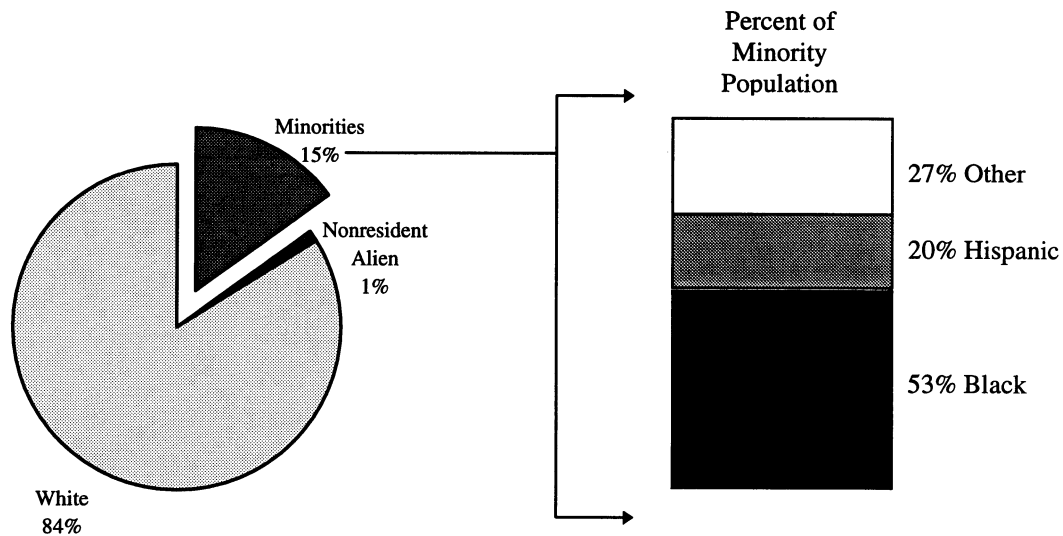
*Source: 1997 Higher Education Directory, Higher Education Publications, Inc.

**Source: IPEDS 1996 Fall Enrollment Survey

University of Miami*	1925	Miami	13,677
-----------------------------	------	-------	--------

*The University of Miami is not a member of ICUF

FALL 1995 RACIAL/ETHNIC DISTRIBUTION OF FULL-TIME FACULTY



- Overall, 15% of the full-time faculty at ICUF institutions were from racial/ethnic minorities. Approximately 18% of the full-time faculty at SUS institutions were from minorities (*Fact Book 1995-96* of the State University System of Florida).
- At ICUF institutions, 32% of full-time faculty were women, and 68% were men. Full-time faculty at SUS institutions included 26% women and 74% men.
- As a group, bachelor's degree institutions had the highest proportion of minority faculty (37%). However, approximately half of the minority faculty at ICUF institutions were at three colleges: Bethune-Cookman College, Edward Waters College, and Florida Memorial College.

Detailed data appear in the table that follows.

Fall 1995
Racial/Ethnic Distribution of Full-Time Faculty

Institution/Degree Offerings	Total Faculty		Total Minorities		White		Black		Hispanic		*Other Minority		Nonresident Alien	
	No.	Percent	No.	Percent	No.	Percent	No.	Percent	No.	Percent	No.	Percent	No.	Percent
Bachelor's Degrees														
Bethune-Cookman College	126	66%	83	66%	41	33%	71	56%	1	1%	11	9%	2	2%
Clearwater Christian College	28	7%	2	7%	26	93%	0	0%	1	4%	1	4%	0	0%
Eckerd College	92	7%	6	7%	86	93%	3	3%	1	1%	2	2%	0	0%
Edward Waters College	51	84%	43	84%	8	16%	35	69%	1	2%	7	14%	0	0%
Flagler College	51	4%	2	4%	49	96%	1	2%	0	0%	1	2%	0	0%
Florida Memorial College	68	74%	50	74%	18	26%	38	56%	2	3%	10	15%	0	0%
Ringling School of Art & Design	39	0%	0	0%	39	100%	0	0%	0	0%	0	0%	0	0%
Southeastern College	46	7%	3	7%	43	93%	0	0%	2	4%	1	2%	0	0%
Warner Southern College	19	5%	1	5%	18	95%	0	0%	0	0%	1	5%	0	0%
Webber College	25	8%	2	8%	23	92%	1	4%	1	4%	0	0%	0	0%
Bachelor's & Master's Degrees														
Embry-Riddle Aeronautical University	189	8%	16	8%	173	92%	2	1%	1	1%	13	7%	0	0%
Florida Southern College	101	2%	2	2%	99	98%	1	1%	1	1%	0	0%	0	0%
Jacksonville University	114	2%	2	2%	112	98%	1	1%	0	0%	1	1%	0	0%
Lynn University	51	4%	2	4%	49	96%	1	2%	0	0%	1	2%	0	0%
Palm Beach Atlantic College	76	3%	2	3%	73	96%	0	0%	2	3%	0	0%	1	1%
Rollins College	154	8%	13	8%	141	92%	6	4%	5	3%	2	1%	0	0%
Saint Leo College	59	3%	2	3%	57	97%	1	2%	0	0%	1	2%	0	0%
University of Tampa	114	4%	4	4%	110	96%	1	1%	2	2%	1	1%	0	0%
Bachelor's, Master's, and Doctoral Degrees														
Barry University	247	16%	40	16%	198	80%	11	4%	18	7%	11	4%	9	4%
Florida Institute of Technology	206	10%	21	10%	172	83%	1	0%	3	1%	17	8%	13	6%
Nova Southeastern University	341	12%	42	12%	297	87%	15	4%	13	4%	14	4%	2	1%
Saint Thomas University	89	18%	16	18%	73	82%	2	2%	14	16%	0	0%	0	0%
Stetson University	167	8%	14	8%	153	92%	4	2%	4	2%	6	4%	0	0%
ICUF Totals	2,453	15%	368	15%	2,058	84%	195	8%	72	3%	101	4%	27	1%

*Other minority includes American Indian/Alaska Native, and Asian/Pacific Islanders.

University of Miami*	1,874	412	22%	1,388	74%	50	3%	234	12%	128	7%	74	4%
-----------------------------	-------	-----	-----	-------	-----	----	----	-----	-----	-----	----	----	----

*The University of Miami is not a member of ICUF

FALL 1996 FULL-TIME FACULTY UNDERGRADUATE TEACHING LOADS

- Approximately 80% of full-time faculty at ICUF institutions had undergraduate teaching loads of nine or more credits.
- At five institutions, more than 90% of full-time faculty had teaching loads of 12 credits or more.
- 87% of faculty at institutions offering the bachelor's as the highest degree taught course loads of nine or more credits.
- As a group, doctoral institutions had the lowest proportion (73%) of faculty with undergraduate teaching loads of nine or more credits; institutions did not indicate whether these faculty also taught graduate courses or were engaged in research as part of their load.

Institution/Degree Offerings	Less than 3 Credit Hours		3-5 Credit Hours		6-8 Credit Hours		9-11 Credit Hours		12 Credit Hours or More	
	No.	Percent	No.	Percent	No.	Percent	No.	Percent	No.	Percent
Bachelor's Degrees										
Bethune-Cookman College	1	1%	6	5%	15	12%	13	10%	94	73%
Clemson Christian College	0	0%	0	0%	0	0%	2	8%	24	92%
Eckerd College	0	0%	1	1%	19	22%	40	45%	28	32%
Edward Waters College	1	2%	1	2%	3	5%	3	5%	48	86%
Flagler College	0	0%	2	4%	0	0%	5	10%	44	86%
Florida Memorial College	0	0%	0	0%	0	0%	5	9%	50	91%
Ringling School of Art & Design	0	0%	0	0%	8	20%	33	80%	0	0%
Southeastern College	4	13%	1	3%	4	13%	4	13%	19	59%
Warner Southern College	0	0%	0	0%	4	17%	1	4%	18	78%
Webber College	0	0%	0	0%	0	0%	0	0%	14	100%
Bachelor's & Master's Degrees										
Embry-Riddle Aeronautical University	2	1%	13	8%	48	28%	54	32%	52	31%
Florida Southern College	1	1%	7	8%	3	3%	10	11%	70	77%
Jacksonville University	6	5%	10	9%	12	11%	17	15%	68	60%
Lynn University	2	4%	7	13%	7	13%	7	13%	30	57%
Palm Beach Atlantic College	0	0%	0	0%	0	0%	0	0%	80	100%
Rollins College	1	1%	2	2%	10	9%	56	50%	43	38%
Saint Leo College	0	0%	4	9%	4	9%	8	18%	28	64%
University of Tampa	0	0%	0	0%	1	1%	2	2%	102	97%
Bachelor's, Master's, and Doctoral Degrees										
Barry University	4	2%	5	3%	21	13%	61	37%	74	45%
Florida Institute of Technology	8	5%	28	17%	39	23%	65	39%	26	16%
Nova Southeastern University	1	1%	11	14%	15	20%	4	5%	45	59%
Saint Thomas University	0	0%	1	2%	6	10%	10	17%	41	71%
Stetson University	0	0%	3	2%	28	18%	89	58%	34	22%
ICUF Totals	31	2%	102	5%	247	13%	489	26%	1032	54%
University of Miami*	50	8%	138	22%	224	36%	131	21%	84	13%

*The University of Miami is not a member of ICUF

PERCENTAGE OF UNDERGRADUATE COURSE SECTIONS TAUGHT BY FACULTY IN FALL 1996

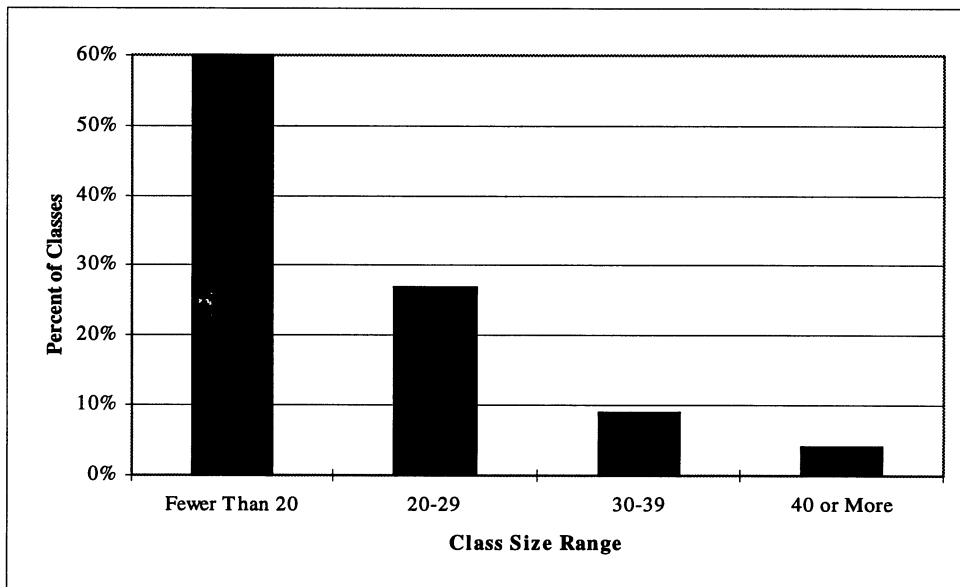
- Approximately two-thirds of all undergraduate classes at ICUF institutions were taught by full-time faculty.
- More than half of all undergraduate classes taught by full-time faculty were taught by full professors and associate professors at ICUF institutions.
- 59% of all undergraduate classes were taught by ranked faculty (assistant, associate, and full professors).
- More than one-third of lower level undergraduate courses were taught by full professors and associate professors.
- Approximately 57% of lower level undergraduate courses were taught by ranked faculty.

Institution/Degree Offerings	Full-Time Faculty					Part-Time and Other Faculty	
	Full Professor	Associate Professor	Assistant Professor	Instructor/Lecturer	Total	*Other Regular Faculty	**Supplemental Faculty
Bachelor's Degrees							
Bethune-Cookman College	7%	10%	34%	30%	81%	0%	19%
Clearwater Christian College	30%	52%	18%	0%	100%	0%	0%
Eckerd College	23%	25%	37%	0%	85%	0%	15%
Edward Waters College	5%	15%	30%	20%	69%	0%	31%
Flagler College	13%	21%	28%	0%	62%	3%	35%
Florida Memorial College	8%	9%	38%	3%	58%	9%	32%
Ringling School of Art & Design	Faculty are not ranked.				96%	NA	4%
Southeastern College	43%	21%	15%	2%	81%	0%	19%
Warner Southern College	14%	25%	19%	7%	65%	0%	35%
Webber College	16%	36%	27%	2%	81%	0%	19%
Bachelor's & Master's Degrees							
Embry-Riddle Aeronautical University	23%	29%	13%	4%	69%	4%	27%
Florida Southern College	21%	16%	21%	1%	59%	3%	38%
Jacksonville University	23%	18%	21%	0%	61%	0%	39%
Lynn University	19%	21%	22%	1%	64%	9%	27%
Palm Beach Atlantic College	15%	20%	31%	7%	72%	28%	0%
Rollins College	32%	17%	9%	0%	58%	10%	32%
Saint Leo College	9%	15%	12%	0%	36%	13%	51%
University of Tampa	29%	26%	17%	2%	75%	4%	21%
Bachelor's, Master's, and Doctoral Degrees							
Barry University	10%	19%	22%	33%	84%	0%	16%
Florida Institute of Technology	20%	26%	25%	2%	73%	4%	23%
Nova Southeastern University	3%	12%	13%	6%	34%	0%	66%
Saint Thomas University	28%	19%	23%	8%	78%	4%	18%
Stetson University	23%	31%	24%	5%	83%	0%	17%
ICUF Totals	18%	20%	21%	7%	68%	4%	28%

*Other regular faculty include visiting faculty, emeriti, and others who have a recurring faculty contract, but are not ranked.
 **Supplemental faculty include adjunct and part-time faculty without a faculty contract that teach on an ad hoc basis.

University of Miami*	21%	20%	10%	25%	76%	9%	14%
-----------------------------	-----	-----	-----	-----	-----	----	-----

*The University of Miami is not a member of ICUF

FALL 1996 SIZE DISTRIBUTION OF UNDERGRADUATE COURSE SECTIONS

One of the strengths and value-added benefits offered by ICUF institutions is small class sizes.

- 60% of all undergraduate classes offered at ICUF institutions had fewer than 20 students.
- 87% of all classes had fewer than 30 students and less than 4% contained 40 or more students.
- The two largest sections among all ICUF institutions contained 158 and 221 students, considerably smaller than the largest sections at SUS institutions.

Detailed data appear in the table that follows.

Size Distribution of Undergraduate Course Sections
Fall 1996

Institution	1-9 Students	10-19 Students	20-29 Students	30-39 Students	40-49 Students	50-99 Students	More than 99 Students
Bachelor's Degrees							
Bethune-Cookman College	39%	28%	17%	11%	4%	0%	0%
Clearwater Christian College	38%	24%	18%	8%	3%	10%	0%
Eckerd College	24%	32%	31%	9%	2%	2%	0%
Edward Waters College							
Flagler College	16%	31%	33%	17%	1%	2%	0%
Florida Memorial College	35%	29%	26%	9%	1%	0%	0%
Ringling School of Art & Design	2%	56%	32%	7%	0%	1%	0%
Southeastern College	22%	33%	20%	9%	5%	11%	0%
Warner Southern College	37%	46%	13%	4%	1%	0%	0%
Webber College	14%	38%	31%	17%	0%	0%	0%
Bachelor's & Master's Degrees							
Embry-Riddle Aeronautical University	16%	26%	35%	18%	4%	2%	0%
Florida Southern College	30%	25%	23%	14%	6%	1%	0%
Jacksonville University	30%	39%	24%	6%	0%	0%	0%
Lynn University	10%	33%	35%	19%	2%	1%	0%
Palm Beach Atlantic College	30%	34%	21%	8%	4%	2%	0%
Rollins College	17%	48%	29%	4%	0%	1%	0%
Saint Leo College	27%	41%	23%	9%	0%	0%	0%
University of Tampa	13%	38%	41%	5%	2%	0%	0%
Bachelor's, Master's, and Doctoral Degrees							
Barry University	18%	46%	29%	6%	2%	0%	0%
Florida Institute of Technology	28%	32%	27%	7%	2%	3%	1%
Nova Southeastern University	16%	58%	19%	6%	0%	1%	0%
Saint Thomas University	10%	46%	38%	6%	0%	0%	0%
Stetson University	27%	36%	25%	10%	1%	0%	0%
ICUF Totals	23%	37%	27%	9%	2%	1%	<1%

Data not Available

Data exclude independent/directed studies, supervised research, internships, performance instruction and other individual instruction.

University of Miami*	21%	33%	22%	13%	5%	5%	2%
-----------------------------	-----	-----	-----	-----	----	----	----

*The University of Miami is not a member of ICUF

FALL 1996 MEAN UNDERGRADUATE COURSE SECTION SIZE

- The mean undergraduate section size across all ICUF institutions was 18 students.
- The mean undergraduate section size for individual ICUF institutions ranged from 15 to 23.
- In comparison, the mean undergraduate section size for individual SUS institutions ranged from 32 to 49 (1996 SUS Accountability Report).

Institution	Total Students All Sections	Total Sections	Mean Section Size
Bachelor's Degrees			
Bethune-Cookman College	7,569	489	15
Clearwater Christian College	3,000	157	19
Eckerd College	5,830	320	18
Edward Waters College	Data Not Available		
Flagler College	7,345	357	21
Florida Memorial College	6,039	357	17
Ringling School of Art & Design	3,799	199	19
Southeastern College	6,044	266	23
Warner Southern College	2,969	194	15
Webber College	1,862	94	20
Bachelor's & Master's Degrees			
Embry-Riddle Aeronautical University	16,747	765	22
Florida Southern College	8,534	444	19
Jacksonville University	8,382	551	15
Lynn University	5,284	236	22
Palm Beach Atlantic College	6,288	346	18
Rollins College	8,637	483	18
Saint Leo College	7,403	469	16
University of Tampa	8,803	466	19
Bachelor's, Master's, and Doctoral Degrees			
Barry University	13,494	784	17
Florida Institute of Technology	6,654	316	21
Nova Southeastern University	11,843	715	17
Saint Thomas University	4,289	226	19
Stetson University	8,552	521	16
ICUF Totals	159,367	8755	18
University of Miami*	38,697	1,673	23

*The University of Miami is not a member of ICUF

COMPARISON OF ACTUAL CREDIT HOURS ACCRUED AT GRADUATION VERSUS THE NUMBER REQUIRED FOR A BACHELOR'S DEGREE

- Data are for the first-time in college full-time freshmen cohort entering in Fall 1991.
- As a group, ICUF institutions graduated students efficiently without a lot of extra credits in excess of the minimum required for graduation.
- Analysis of the student population that graduated within five years after entry revealed that students graduated in a mean of 4.1 years, and a range of 3.8 to 4.5 years.
- On average, students graduated with only six credits in excess of the mean number needed to complete requirements.

Institution	Mean Credit Hours		Fall 1991 First-Time in College Full-Time Freshmen No. in Cohort at Entry	No. of Students Graduated in 5 Years	Mean Years to Graduate
	Required to Graduate Per Catalog	Actually Accrued at Graduation			
Bachelor's Degrees					
Bethune-Cookman College	130	134	630	62	4.5
Clearwater Christian College	128	139	97	27	4.3
Eckerd College	126	133	337	202	4.1
Edward Waters College	n/avail	n/avail	282	40	----
Flagler College	120	125	290	133	3.9
Florida Memorial College	124	134	345	112	3.8
Ringling School of Art & Design	124	124	120	76	4.1
Southeastern College	130	139	214	66	4
Warner Southern College	128	134	48	8	4.4
Webber College	122	125	73	34	4
Bachelor's & Master's Degrees					
Embry-Riddle Aeronautical University	133	134	708	280	4.1
Florida Southern College	124	130	354	173	4
Jacksonville University	129	138	389	125	4.3
Lynn University	125	126	117	71	3.9
Palm Beach Atlantic College	128	133	216	52	4.1
Rollins College	117	123	399	248	3.9
Saint Leo College	122	129	200	62	3.9
University of Tampa	124	129	347	143	4.2
Bachelor's, Master's, and Doctoral Degrees					
Barry University	120	134	301	94	4.2
Florida Institute of Technology	129	n/avail	424	214	4.3
Nova Southeastern University	122	123	146	38	4.1
Saint Thomas University	124	131	181	57	4.1
Stetson University	126	132	453	291	4.1
*ICUF Mean	125	131	6,671	2,608	4.1

*Values represent means weighted by the number of students that graduated from each institution.

University of Miami*	122	131	1,829	986	4.1
-----------------------------	-----	-----	-------	-----	-----

*The University of Miami is not a member of ICUF

GRADUATION AND RETENTION RATES FOR FIRST-TIME IN COLLEGE FULL-TIME FRESHMEN

The two tables that follow describe the racial/ethnic composition and rates of graduation and retention for cohorts of first-time in college full-time freshmen that entered college in the Fall 1991. Selection of students to be included in the cohorts followed the selection criteria prescribed by federal regulations for implementation of the Student Right-to-Know Act (Public Law 101-542).

It is difficult to make valid comparisons of the graduation rates of individual institutions. In order to do so, one must be able to identify institutions with very similar institutional and student characteristics. The ICUF member institutions and the SUS institutions vary considerably in their missions, the types of students served, racial/ethnic diversity, selectivity (i.e., admissions standards and requirements), the availability of remedial and/or academic support services, etc. Therefore, the reader should be cautious in attempting to evaluate the performance of a particular institution, or to compare institutions without this essential contextual information.

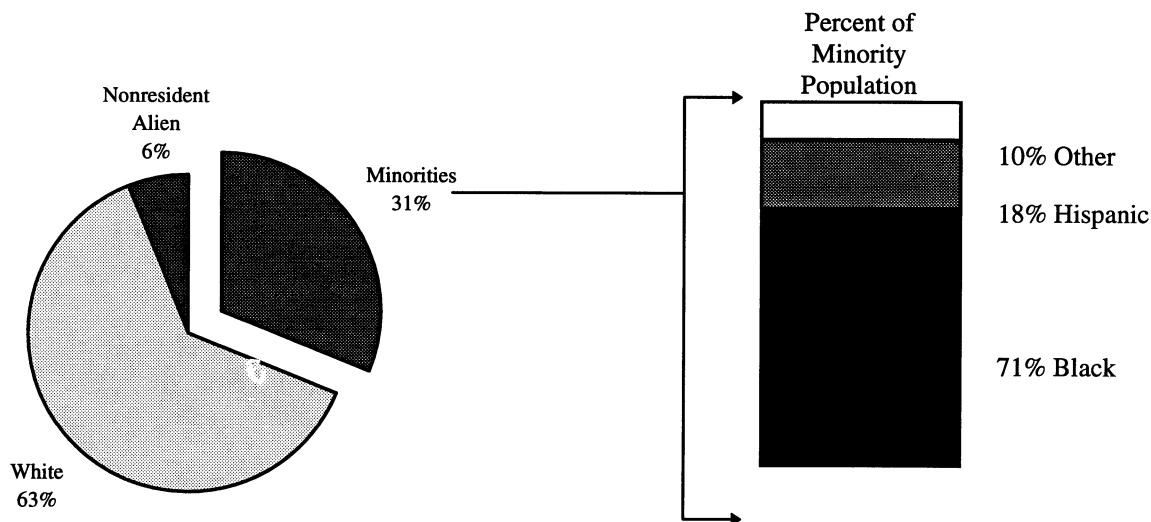
Aggregate rates of graduation and retention for ICUF institutions were compared with SUS institutions, using data from the 1995-96 Fact Book of the State University System of Florida. Data at the *sector-level* may to some extent normalize for variance among individual institutions due to differences in student and institutional characteristics described above. As noted in the table, ICUF institutions as a group had a 5-year graduation rate of 41%. This compared favorably with the a five-year rate for the SUS of 47%.

Data concerning the proportion of freshmen that were first-time in college students was included to illustrate that graduation rates for first-time in college freshmen generally do not represent the overall productivity of an institution's undergraduate programs. For example, first-time in college full-time freshmen represented approximately 18% of freshmen at Barry University; therefore, it is not a good measure of the rate of graduation of undergraduates in general at the university.

Moreover, rates of graduation of small circumscribed cohorts of undergraduates might suggest that ICUF institutions produce small numbers of bachelor's degree recipients. In fact, overall productivity on an annual basis is likely quite substantial. As an example, 38 bachelor's degrees have been awarded by Nova Southeastern University to members of the Fall 1991 cohort so far, but the university awards more than 900 bachelor's degrees annually.

Finally, five-year graduation rates are not final or ultimate rates. Colleges had up to 28% of students in the entering cohort still enrolled. Thus, the completion rate will continue to increase until all students in the cohort have graduated or left the institution.

**RACIAL/ETHNIC DISTRIBUTION OF FIRST-TIME IN COLLEGE FRESHMEN
ENTERING IN FALL 1991**



- In the aggregate, the Fall 1991 Cohort of first-time in college full-time freshmen at ICUF institutions included 31% of freshmen from minorities. In comparison, 35% of full-time lower level undergraduates enrolled in Fall 1991 at SUS institutions were from minorities.
- Black students were the predominant minority group served by both ICUF and SUS institutions in 1991.
- The ICUF group includes four institutions where the majority of students were from racial/ethnic minority groups: Bethune-Cookman College, Edward Waters College, Florida Memorial College, and St. Thomas University. The SUS has two, Florida A & M and Florida International University.

Detailed data appear on the table that follows.

Racial/Ethnic Distribution of Students in Fall 1991 SRK Cohorts

Institution	Original Cohort	Total Minorities		White		Black		Hispanic		*Other Minority		Nonresident Alien	
		No.	Percent	No.	Percent	No.	Percent	No.	Percent	No.	Percent	No.	Percent
Bachelor's Degrees													
Bethune-Cookman College	630	614	97%	5	1%	608	97%	2	0%	4	1%	11	2%
Clemson Christian College	97	4	4%	93	96%	2	2%	2	2%	0	0%	0	0%
Eckerd College	337	30	9%	279	83%	15	4%	8	2%	7	2%	28	8%
Edward Waters College	282	278	99%	0	0%	277	98%	1	0%	0	0%	4	1%
Flagler College	290	9	3%	273	94%	5	2%	3	1%	1	0%	8	3%
Florida Memorial College	345	324	94%	10	3%	313	91%	11	3%	0	0%	11	3%
Ringling School of Art & Design	120	14	12%	106	88%	5	4%	3	3%	6	5%	0	0%
Southeastern College	214	20	9%	188	88%	5	2%	14	7%	1	0%	6	3%
Warner Southern College	48	9	19%	37	77%	6	13%	1	2%	2	4%	2	4%
Webber College	73	21	29%	41	56%	17	23%	3	4%	1	1%	11	15%
Bachelor's & Master's Degrees													
Embry-Riddle Aeronautical University	708	109	15%	577	81%	21	3%	40	6%	48	7%	22	3%
Florida Southern College	354	5	1%	336	95%	2	1%	1	0%	2	1%	13	4%
Jacksonville University	389	52	13%	308	79%	27	7%	15	4%	10	3%	29	7%
Lynn University	117	25	21%	90	77%	3	3%	10	9%	12	10%	2	2%
Palm Beach Atlantic College	216	27	13%	182	84%	7	3%	9	4%	11	5%	7	3%
Rollins College	399	57	14%	332	83%	10	3%	30	8%	17	4%	10	3%
Saint Leo College	200	41	21%	142	71%	2	1%	7	4%	32	16%	17	9%
University of Tampa	347	69	20%	257	74%	18	5%	27	8%	24	7%	21	6%
Bachelor's, Master's, and Doctoral Degrees													
Barry University	301	113	38%	117	39%	38	13%	71	24%	4	1%	71	24%
Florida Institute of Technology	424	52	12%	320	75%	13	3%	26	6%	13	3%	52	12%
Nova Southeastern University	146	40	27%	100	68%	23	16%	14	10%	3	2%	6	4%
Saint Thomas University	181	106	59%	35	19%	41	23%	63	35%	2	1%	40	22%
Stetson University	453	42	9%	405	89%	12	3%	19	4%	11	2%	6	1%
ICUF Totals	6,671	2,061	31%	4,233	63%	1,470	22%	380	6%	211	3%	377	6%

*Other minority includes American Indian/Alaska Native, and Asian/Pacific Islanders.

University of Miami*	1,829	644	35%	1,071	58%	168	9%	349	19%	127	7%	114	6%
-----------------------------	-------	-----	-----	-------	-----	-----	----	-----	-----	-----	----	-----	----

*The University of Miami is not a member of ICUF

**FIVE-YEAR GRADUATION AND RETENTION RATES
FOR FIRST-TIME IN COLLEGE FULL-TIME FRESHMEN ENTERING IN FALL 1991**

- The aggregate five-year graduation rate for ICUF institutions was 41%. This compares favorably with the five-year aggregate graduation rate of 47% for the SUS.
- Graduation rates at ICUF institutions ranged from 14-63% and seven had rates greater than or equal to 50%. Rates at SUS institutions ranged from 30-61%; only two had rates greater than or equal to 50%.
- Overall, 48% of first-time in college freshmen at ICUF institutions had graduated or were still enrolled five years after entry.
- In the aggregate, only half of all freshmen at ICUF institutions were first-time in college full-time freshmen.

Institution	First-Time in College Full-Time Entering Freshmen				
	Number in Cohort at Entry	*Percent of All Freshmen	Percent Five Years after Entry		
			**Graduated	Still Enrolled	Still Enrolled + Graduated
Bachelor's Degrees					
Bethune-Cookman College	630	57%	24%	28%	52%
Clearwater Christian College	97	84%	33%	3%	36%
Eckerd College	337	78%	60%	0%	60%
Edward Waters College	282	42%	14%	2%	16%
Flagler College	290	78%	57%	1%	58%
Florida Memorial College	345	51%	32%	11%	43%
Ringling School of Art & Design	120	58%	63%	1%	64%
Southeastern College	214	40%	15%	7%	22%
Warner Southern College	48	69%	17%	6%	23%
Webber College	73	67%	47%	3%	49%
Bachelor's & Master's Degrees					
Embry-Riddle Aeronautical University	708	51%	43%	10%	54%
Florida Southern College	354	64%	49%	2%	51%
Jacksonville University	389	73%	32%	5%	37%
Lynn University	117	53%	61%	5%	66%
Palm Beach Atlantic College	216	58%	25%	5%	30%
Rollins College	399	46%	62%	3%	65%
Saint Leo College	200	16%	31%	1%	32%
University of Tampa	347	42%	41%	2%	43%
Bachelor's, Master's, and Doctoral Degrees					
Barry University	301	18%	35%	11%	46%
Florida Institute of Technology	424	66%	50%	8%	59%
Nova Southeastern University	146	39%	26%	5%	32%
Saint Thomas University	181	36%	31%	11%	43%
Stetson University	453	86%	64%	4%	68%
ICUF Totals	6671	50%	41%	7%	48%

*Data from IPEDS Fall 1995 Enrollment Surveys.

**Data reflect the number of students in the cohort that graduated as of June 30, 1996 (i.e., within five years after entry).

University of Miami*	1,829	70%	54%	5%	59%
-----------------------------	-------	-----	-----	----	-----

*The University of Miami is not a member of ICUF

**ASSOCIATE OF ARTS TRANSFER STUDENTS FROM FLORIDA COMMUNITY COLLEGES
TWO- AND THREE-YEAR GRADUATION RATES FROM ICUF INSTITUTIONS**

- Without exception, ICUF institutions admitted 100% of AA degree transfer students from Florida Community Colleges into the program of their choice, thus providing access to programs either not available, or with limited access (space) at Florida public universities.
- The ICUF aggregate three-year graduation rates for the 1992 and 1993 cohorts of full-time AA degree transfer students were 73% and 69%, respectively. This compares favorably with three-year graduation rates of 56% for AA degree transfer students entering the SUS.
- Three-year graduation rates for AA degree transfer students entering in Fall 1992 ranged from 25 % to 100% for individual ICUF institutions; seven had rates greater than 60%. Completion rates for AA transfer students at SUS institutions ranged from 43% to 66% and only two had rates greater than 60%.

Institution	Fall 1992 AA Transfer Cohort			Fall 1993 AA Transfer Cohort			Fall 1994 AA Transfer Cohort		
	No. of Transfers	Graduated in Two Years No. Percent	Graduated in Three Years No. Percent	No. of Transfers	Graduated in Two Years No. Percent	Graduated in Three Years No. Percent	No. of Transfers	Graduated in Two Years No. Percent	Graduated in Three Years No. Percent
Bachelor's Degrees									
Bethune-Cookman College	NA			NA			NA		
Cleanwater Christian College	NA			NA			NA		
Eckerd College	21	10 48%	16 76%	14	8 57%	9 64%	21	15 71%	
Edward Waters College	3	2 67%	1 33%	3	3 100%		0		
Flagler College	22	10 45%	22 100%	22	11 50%	19 86%	17	5 29%	
Florida Memorial College		Data not available			Data not available			Data not available	
Ringling School of Art & Design	4	4 100%		7	0 0%	5 71%	7	0 0%	
Southeastern College	NA			NA			NA		
Warner Southern College	17	8 47%	11 65%	39	29 74%	29 74%	51	31 61%	
Webber College	8	2 25%	2 25%	5	2 40%	5 100%	8	3 38%	
Bachelor's & Master's Degrees									
Embry-Riddle Aeronautical University		Data not available			Data not available			Data not available	
Florida Southern College	12	7 58%	11 92%	23	15 65%	22 96%	27	21 78%	
Jacksonville University	NA			NA			NA		
Lynn University	3	2 67%	0 0%	8	8 100%		9	6 67%	
Palm Beach Atlantic College		Data not available			Data not available			Data not available	
Rollins College	NA			16	3 19%	7 44%	28	13 48%	
Saint Leo College	3	0 0%	1 33%	17	9 53%	15 88%	28	13 46%	
University of Tampa	40	14 35%	24 60%	34	18 53%	26 76%	36	18 50%	
Bachelor's, Master's, and 3 or fewer Doctoral Degrees									
Barry University	187	108 58%	143 76%	135	79 59%	108 80%	142	96 68%	
Florida Institute of Technology		Data not available		28	2 7%	17 61%	28	9 32%	
Nova Southeastern University	55	35 64%	45 82%	59	27 46%	42 71%	63	29 46%	
Saint Thomas University	81	48 59%	69 85%	54	28 52%	41 76%	22	9 41%	
Stetson University	102	25 25%	60 59%	99	20 20%	41 41%	85	17 20%	
ICUF Totals	558	275 49%	405 73%	563	262 47%	386 69%	606	290 48%	

*Data include only full-time transfer students from Florida Community Colleges with which the institution has an articulation agreement.

NA generally indicates the absence of an articulation agreement. Several institutions did not sign an articulation agreement with Florida community colleges until Spring 1997.

University of Miami*	83	23	28%	53	64%	71	24	34%	53	75%	47	17	38%
-----------------------------	----	----	-----	----	-----	----	----	-----	----	-----	----	----	-----

*The University of Miami is not a member of ICUF

AVERAGE DEBT ACCUMULATED BY FOUR-YEAR BACHELOR'S DEGREE GRADUATES FOR STUDENTS WHO GRADUATED DURING THE PERIOD JULY 1, 1995 THROUGH JUNE 30, 1996

- The mean accumulated debt for a small group of 733 first-time in college graduates at ICUF institutions was \$12,991. The range of mean indebtedness for students at individual institutions was \$6,047 to \$24,860.
- The ratio of mean debt accumulated in Stafford loans to total indebtedness suggests that more than 90% of loan funds came from Stafford loans.
- Only seven institutions gave institutional loans with means ranging from \$500 to \$8611.

Institution/Degree Offerings	Total Indebtedness from all Loans		Stafford Loans		Perkins Loans		Institutional Loans	
	Total Students with 1 or more loans	Mean Indebtedness at Graduation	Students with Loans	Mean Cumul. Loan Amount	Students with Loans	Mean Cumul. Loan Amount	Students with Loans	Mean Cumul. Loan Amount
Bachelor's Degrees								
Bethune-Cookman College	40	\$14,768	40	\$14,768	0	---	NA	---
Clearwater Christian College	21	\$9,000	21	\$9,000	0	---	0	---
Eckerd College	18	\$14,415	18	\$13,441	15	\$1,102	2	\$500
Edward Waters College	141	\$11,625	141	\$11,625	0	---	0	---
Flagler College	35	\$11,637	32	\$12,195	3	\$5,690	0	---
Florida Memorial College	110	\$10,500	110	\$10,500	NA	---	NA	---
Ringling School of Art & Design	34	\$24,860	34	\$24,860	0	---	0	---
Southeastern College	NA	---	---	---	---	---	---	---
Warner Southern College	1	\$6,047	1	\$6,047	0	---	0	---
Webber College	9	\$14,880	9	\$14,397	4	\$1,088	0	---
Bachelor's & Master's Degrees								
Embry-Riddle Aeronautical University	No students met selection criteria		---	---	---	---	---	---
Florida Southern College	40	\$9,586	39	\$7,282	14	\$3,000	13	\$4,417
Jacksonville University	49	\$7,764	48	\$10,818	16	\$3,898	6	\$8,611
Lynn University	2	\$15,125	2	\$13,625	1	\$3,000	0	---
Palm Beach Atlantic College	14	\$10,860	14	\$10,788	1	\$1,000	---	---
Rollins College	38	\$11,832	36	\$11,680	14	\$1,606	2	\$3,811
Saint Leo College	11	\$9,807	11	\$9,534	2	\$1,500	0	---
University of Tampa	16	\$7,120	16	\$9,289	6	\$1,450	1	\$4,000
Bachelor's, Master's, and Doctoral Degrees								
Barry University	14	\$10,852	14	\$9,445	9	\$2,188	0	---
Florida Institute of Technology	27	\$18,552	26	\$17,438	17	\$2,766	1	\$500
Nova Southeastern University	4	\$22,870	4	\$22,870	NA	---	NA	---
Saint Thomas University	9	\$20,744	9	\$20,744	0	---	0	---
Stetson University	100	\$17,481	100	\$14,391	39	\$5,412	24	\$4,083
*ICUF Mean Cumulative Debt	733	\$12,991	725	\$12,586	141	\$3,250	49	\$4,494

*values represent means weighted by the number of students in each loan category at each institution. Note that in order to be included above, students had to be first-time in college full-time freshmen at entry and had to receive the F-RAG in their first term of attendance.

University of Miami*	226	\$16,994	219	\$15,169	156	\$3,235	3	\$4,667
-----------------------------	-----	----------	-----	----------	-----	---------	---	---------

*The University of Miami is not a member of ICUF

ICUF INSTITUTIONS THAT HAD UNDERGRADUATE ACADEMIC PROGRAMS REVIEWED FOR SPECIALIZED ACCREDITATION IN 1995-96

- 11 of 24 institutions had programs reviewed for specialized accreditation. None were denied accreditation.

Institution	Program(s)	Approved	Conditionally Approved	Pending	Denied	
Bachelor's Degrees						
Bethune-Cookman College	Business Mgt. & Admin.			x		
	Nursing	x				
Ringling School of Art & Design	Interior Design	x				
Warner Southern College	*Elementary Education	x				
	English Education		x			
	Middle School Science		x			
	Music Education	x				
	Physical Education	x				
Bachelor's & Master's Degrees						
Jacksonville University	*Education	x				
	Nursing			x		
Palm Beach Atlantic College	Music & Fine Arts	x				
Rollins College	Chemistry	x				
Saint Leo College	Education	x				
University of Tampa	Education	x				
	Sports Management			x		
Bachelor's, Master's, and Doctoral Doctoral Degrees						
Barry University	Anesthesiology			x		
	Elementary Education	x				
	English Secondary Educ.	x				
	Math Secondary Educ.	x				
	Physical Education	x				
	Physical Therapy			x		
Florida Institute of Technology	Business			x		
	*Science Education	x				
Nova Southeastern University	Physician Assistant	x				
Total Programs Under Review		25	17	2	6	
Percent of Total			68%	8%	24%	0%

*Programs reviewed by the Florida Department of Education.

University of Miami*	Nursing	x				
	Physical Therapy	x				
	Psychology	x				
	School of Music	x				
	Music Therapy	#				
	Chemistry	x				
Total Programs Under Review		6	6			
Percent of Total			100%	0%	0%	0%

accepts findings of National Association of Schools of Music

*The University of Miami is not a member of ICUF